

ANUBA TECHNOLOGIES

Physical AI Infrastructure

The Perception Fabric for Autonomous Systems

February 2026

The Problem

LONG LINES – LEGACY PROCESSES – CUSTOMER ABANDONMENT : LOST REVENUE

200 K(US)

400K+ DRIVE-THRU
LANES GLOBALLY

70%

QSR REVENUE COMES FROM
DRIVE-THRU

15-20

MINUTE WAIT TIMES AT
POPULAR LOCATIONS

30%

OF CUSTOMERS
ABANDON LONG LINES

DRIVE THRU INFRASTRUCTURE NEEDS AN UPGRADE

WE CAN TAKE THE DRIVE-THRU EXPERIENCE FROM THIS...

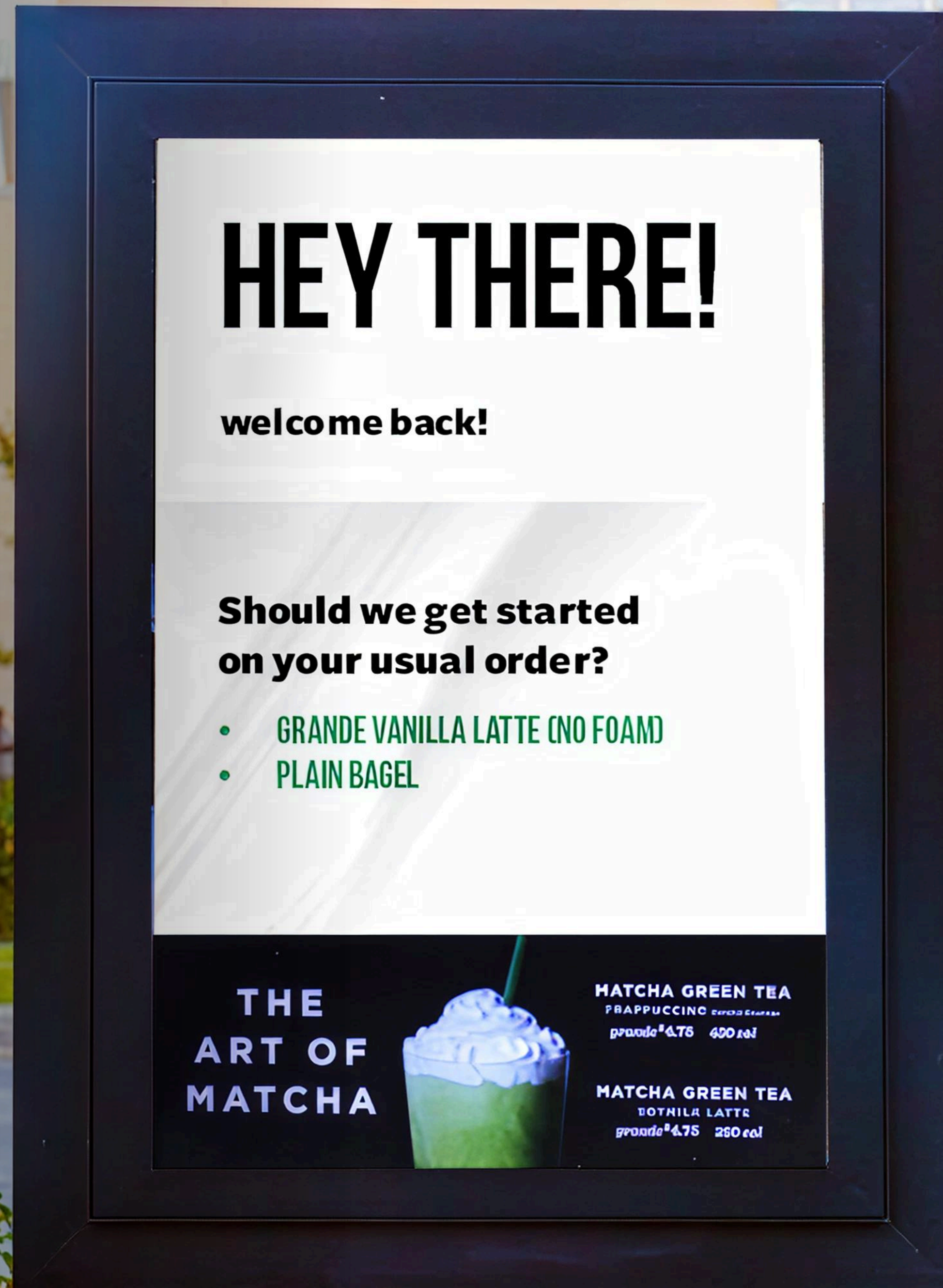
Today: Static menu boards, no customer recognition. The restaurant has no idea who's in line until they speak.



TO THIS...

With Perception: Returning customers are recognized by vehicle. Personalized greetings and past orders appear automatically - before they say a word.

Smarter Operations: The kitchen gets advance visibility into incoming orders, starting prep earlier and reducing bottlenecks across the line.



HEY THERE!

welcome back!

Should we get started on your usual order?

- GRANDE VANILLA LATTE (NO FOAM)
- PLAIN BAGEL

THE ART OF MATCHA

MATCHA GREEN TEA FRAPPUCCINO
grande \$4.75 400 cal

MATCHA GREEN TEA BOTHLER LATTE
grande \$4.75 280 cal

TO THIS.

Tomorrow: Orders placed from in-car screens, synced to kitchen prep in real-time. Food ready the moment they arrive.



THE IMPACT

FASTER CUSTOMER SERVICE

Pre-stage orders for recognized vehicles cut seconds off every transaction.

HIGHER KITCHEN PRODUCTIVITY

Smarter operations through real-time lane data -- driving staffing, prep timing, and throughput across the kitchen.

HIGHER TICKET SIZE

Personalized upsells from order history increase AOV.

REDUCED ABANDONMENT

Fewer customers leave the line. Real-time queue visibility keeps operations moving and protects topline revenue.

ROBOTICS ENABLEMENT

Delivery robots gain real-time perception and coordination — powered by infrastructure already deployed for drive-thru ops.

HEY THERE!

welcome back!

Should we get started
on your usual order?

- GRANDE VANILLA LATTE (NO FOAM)
- PLAIN BAGEL

THE
ART OF
MATCHA



HATCHA GREEN TEA
FRAPPUCCINO with Cream
grande® 4.75 400 cal

HATCHA GREEN TEA
BOTHILLER LATTE
grande® 4.75 260 cal

HOW IT WORKS

TRUE MULTI-TENANT EDGE INFRASTRUCTURE

1

EDGE-FIRST COMPUTING

All inference runs on-site. No cloud dependency, no latency, no data leaves the premises. Operations continue even when the internet doesn't.

2

NO INTEGRATION REQUIRED

No POS connection needed. No IT involvement. Fully independent from existing restaurant systems from day one.

3

AUTONOMOUS SYSTEMS READY

Same cameras and edge AI that track vehicles guide delivery robots, coordinate curbside handoffs, and enable autonomous commerce. No new hardware required.

4

CAPACITY-BASED PRICING

Billed by the number of cameras, lanes, and zones monitored. Predictable cost that scales with your operation.

5

RAPID DEPLOYMENT

Ship an edge box and connect to existing cameras -- or we deploy a full kit on-site. No construction, no downtime.

[CAMERA] → [EDGE BOX] → [PRIVATE CELLULAR] → [MULTI-TENANT INFERENCE] → [EVENT STREAMS]

CUSTOMERS DON'T BUY CAMERAS OR BOXES—THEY RENT PERCEPTION BY LANE, ZONE, OR SITE ON A CAPACITY-BASED MODEL.

\$350B MARKET TAM



QSR drive-thru is the beachhead. The same infrastructure scales to a \$350B connected vehicle economy.

TRACTION



TECHNICAL VALIDATION

NVIDIA Inception Member -- \$650K+ in credits, dedicated engineering support, and discounted hardware. AWS Partner -- \$100K in credits and dedicated engineering resource assigned to our team. Qualcomm -- in discussions.

CUSTOMER VALIDATION

Live deployment at Wiener Schnitzel -- 100% uptime, hundreds of vehicles recognized daily. Pipeline: Coca-Cola, Dave's Hot Chicken (Roark Capital portfolio), Costco gas operations, Top 3 QSR chain (under NDA).

INDUSTRY VALIDATION

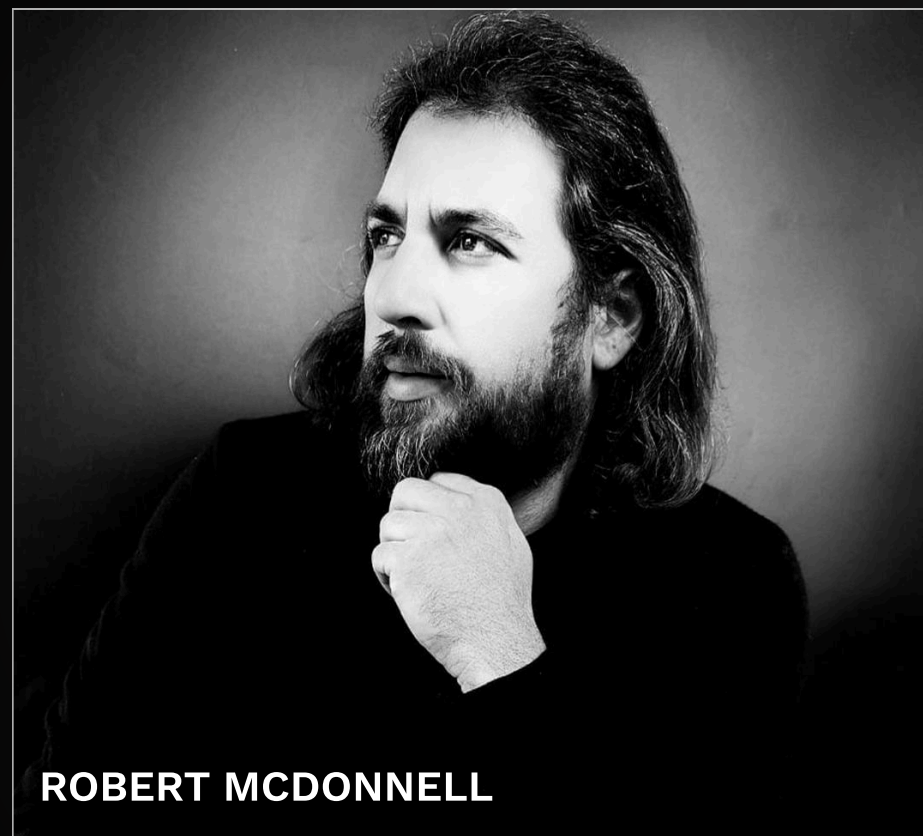
MURTEC 2026 Start-Up Alley -- Top 15 semi-finalist. Live production demo from deployed pilot at the booth. Caesars Palace, March 9-11.



IP PROTECTION

2 provisional patents filed -- QSR Operational Control System & Connected Vehicle Service Orchestration. 3rd patent in process for filing.

PROVEN TEAM FOR PHYSICAL AI INFRASTRUCTURE



ROBERT MCDONNELL

CEO FOUNDER



JAY INOUYE

COO OPERATIONS



JONATHAN LYN-SHUE

CTO TECHNOLOGY

DEEP DOMAIN EXPERTISE

Carrier-Grade Experience

ATT, T-Mobile, Verizon

Enterprise Scale

PG&E + Stanford Health

Autonomous Infrastructure

Pronto.ai haulage systems

Foundational Patents


2 foundational patents filed

CARRIER-GRADE INFRASTRUCTURE EXPERIENCE .

BUILDING THE PHYSICAL AI LAYER FOR THE AUTONOMOUS TOMORROW.

Get in Touch

 robert@anubatechnologies.com

 408-326-9360

 anubatechnologies.com

THANK YOU