



Building the Largest AI-Driven Robotics Workforce in the World



What We've Accomplished

Most sq ft. autonomously finished by a construction robotics platform. 2M+ sqft across 80+ projects.

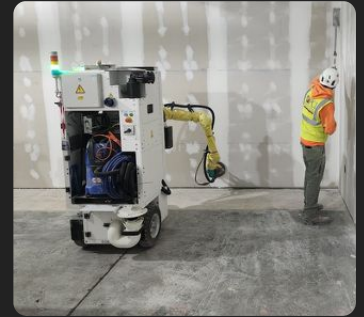
20+ robots deployed on active construction sites and in offsite manufacturing facilities. Safety certified

Active sales pipeline with several of the largest U.S. construction companies

Only system requiring zero site prep. No BIM, no pre-scan, no cloud, no markers

Over the past 8 years, we've built the leading autonomy stack for industrial mobile manipulation in unstructured environments.

Over 2 million sq. ft has been covered in projects across Europe and the US



Multi-Purpose, Industrial-Grade Construction Robots

Fully autonomous painting/drywall finish applications
2 hardware models, 20+ units deployed.

OUR MODELS

EG7



- Compact
- Modular
- For Residential / Office Spaces

EG7+



- High Reach (24')
- Heavy Duty
- CRE, Data Centers, Off-Site

Autonomous mobile manipulator platform featuring real-time environmental perception, dynamic work and path planning, and robust collision avoidance.

NVIDIA GPU - powered edge AI for real-time semantic perception and decision-making

Onboard support for standard 110V / 230V **power tools**

Modular software platform enabling rapid deployment of **new applications**

Fast, **flexible tool-changing** for multi-purpose operation

Continuous **data capture** with cloud-connected monitoring and **dashboard** analytics

Customers Make Money from Day 1 Without CapEx

COST

Monthly payments equals to

1-2

professional workers

PRODUCTIVITY

A robot and operator *equivalent* to

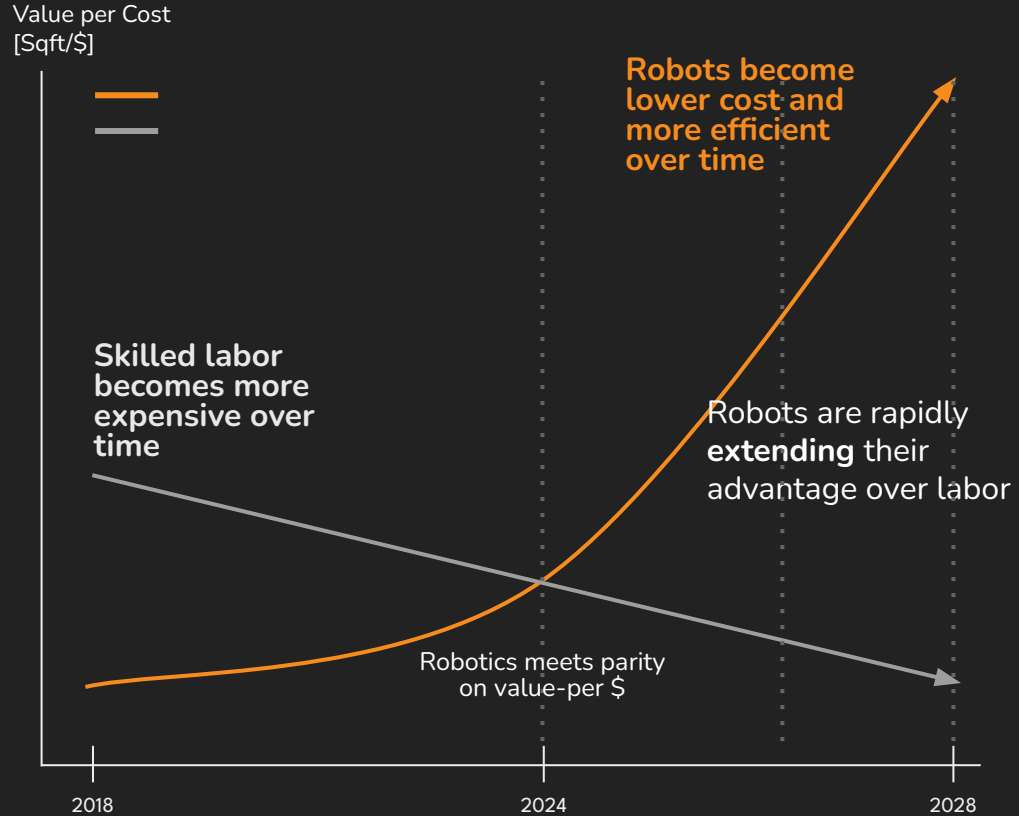
8-10x

workers or more

The **\$500B** construction labor market can't find skilled workers

MARKET TIMELINE	
Labor Shortage Deepens	500K skilled workers missing yearly Labor scarcity now caps growth
Demand Keeps Rising	Surging investment in data centers, industrial facilities and offsite
Labor Costs Escalate	Finisher wages +40% since 2018 Finishing remains 60-70% labor cost
Robotics Costs Fall	Robot prices halved in a decade Cheaper sensors, batteries, edge AI
The Inflection Point	By 2027, the efficiency gap will trigger an irreversible turning point.

Labor vs Robotics - Cost Savings Trends



In 2025, the value margin of robotics over manual crews crossed a critical threshold, triggering a tipping point for the entire industry



How EG7 Works

- ✖ No BIM
- ✖ No Prescan
- ✖ No Programming
- ✖ No Marking

1 Transport

Simply unload from the truck and drive the robot with an Xbox controller

2 Load Materials

Add paint to the tank as needed

3 Position

Position the robot in front of the first wall (starting point)

4 Choose an Application

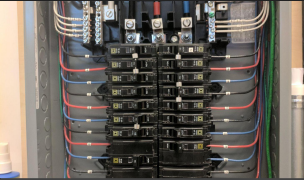
Selected an application from the “Applications” menu

5 Press “Start”

Watch Okibo work



Interiors are the Keystone Trade



	Site Work / Excavation	Concrete/ Structural	MEP	Exterior Envelope	Interior Finishing
Labor intensity per sqft	Low	Medium	High	Medium	Very High
Share of project schedule	5-10%	10-15%	15-20%	10-15%	~60%
Environmental control	Outdoor weather- exposed	Outdoor	Mixed	outdoor	Indoor, controlled
Adjacent -trade leverage	Limited	Limited	Limited	Limited	6+ trades on one platform

Painting/Drywall is our wedge. Next, we will automated every interior trade.

Today we address painting and drywall, a \$340B global market. The same EG7 platform, with new toolheads, unlocks \$650B+ in adjacent interior trades.

\$340B

Phase 1 - Painting and Drywall TAM

Painting contractors:
\$200–230B
Drywall contractors:
\$140–170B

\$650B

Phase 2 - All Interior Finishing Trades

Phase 1: \$340B
+ Flooring: \$140B
+ Tiling: \$55B
+ Other finishing*:
\$115B

Surface prep, fireproofing, SPF, plaster, insulation

\$1T+

Phase 3 - Interior Fit Out

Phase 2: \$650B
+ Interior MEP: \$200B
+ Millwork & finish: \$100B

↓ CURRENT APPLICATIONS

Spray Painting

Roller Painting

Level 5 Drywall Finish

Level 4 and Level 5 Sanding

Level 4 Finish

Joint Taping

+ FUTURE APPLICATIONS

Surface Preparation

Flooring

Drywall Installation

Foam / Coating (SPF)

Fireproofing

Tiling

We swap
toolheads, not
entire robots.
**One platform,
many trades.**

Why it Matters



High Availability

500,000 skilled workers short yearly



Safety

Falls, strain, back/neck injuries, and hazardous material exposure



Eco-Friendly

Up to 50% reduction in overspray and material waste



Productivity

High-throughput industrial execution



Consistent High Quality

Same output every day , zero tolerance for error



Data Access

Real-time dashboard: 7,871 avg sqft/day tracked per project

\$3.5M Annual Revenue Run Rate in less than 2 years since opening the US operation

JAN 2025



US office
opened

MARCH 2026



12 robots
contracted/
deployed
\$1.5M

DEC 2026



Pipeline
converted to
\$3.5M Annual
Revenue



Turner



We have a clear path to
10x our revenue in 2 years
from our current
customer base alone.

VALUE
~\$3.5 M
Annual Revenue

Current value of pilots after
conversion from 11 accounts

VALUE
\$36M

Annual Recurring Revenue

430 robots × \$250K/3-year lease

Expected expansion from 11
existing accounts

Path to 1000 robots (3-4 years) - Three Proven ICPs

Offsite Volumetric
Manufacturing

~450 Robots



Data Centers / Large Walls

~400 Robots

Turner



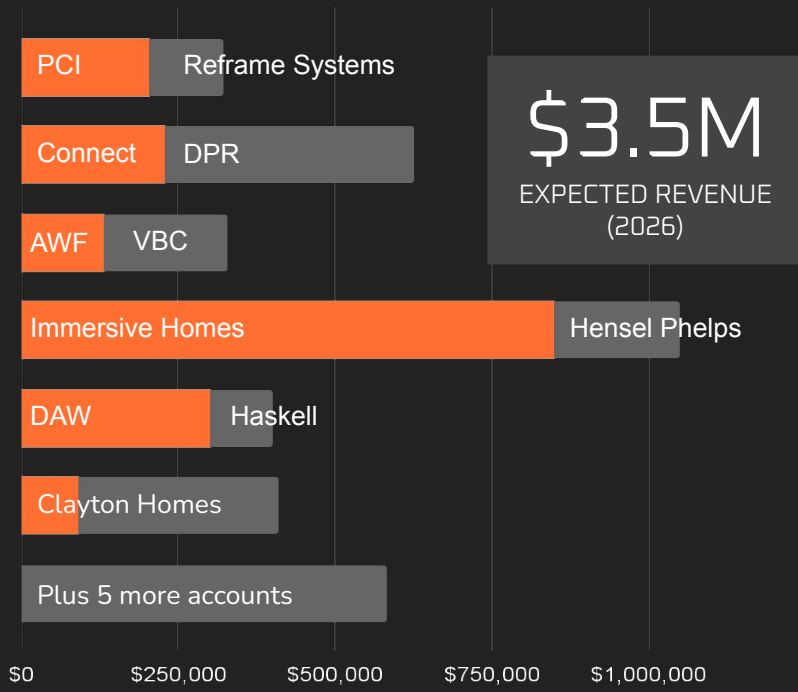
Vertically Integrated Teams

~150 Robots

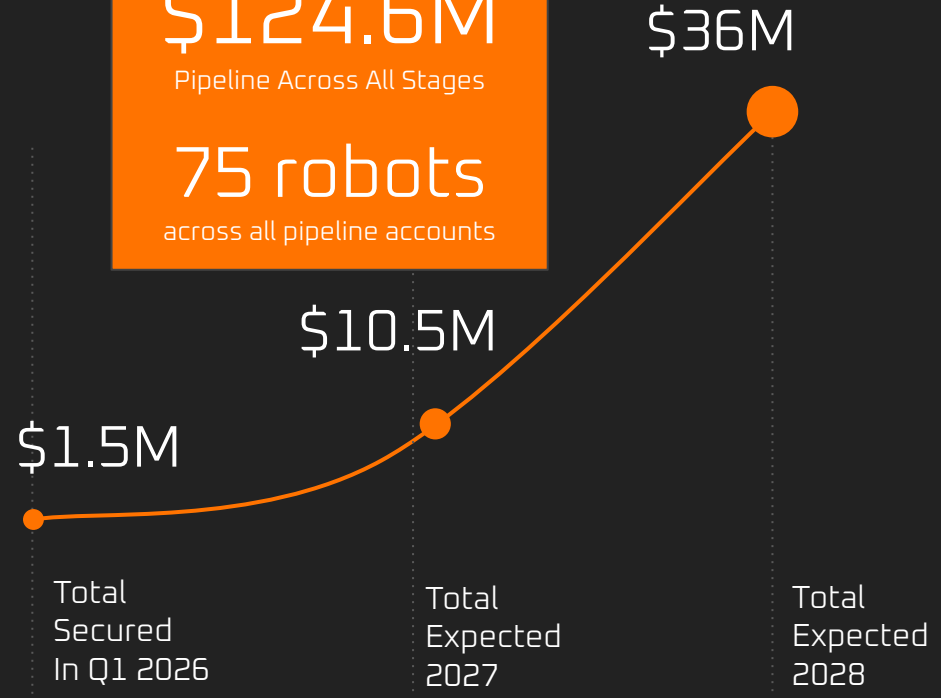


REVENUE PATH → \$10M (2027)

■ 2026 SECURED
 ■ 2026 Expected



\$124.6M
 Pipeline Across All Stages
75 robots
 across all pipeline accounts



Unit Economics

BUSINESS MODEL

Leasing Robots to Contractors



Business Model: \$250K for a 3-year leasing contract

Gross Margins: 65% → 80% in Q4 (lower BOM)

Current BOM: \$80K

2027

BOM: Under \$40K

Business Model: Hardware Sales + Recurring Service

Team: Deep Robotics Expertise Meets Industry

GUY GERMAN
Co-Founder, CEO



Entrepreneur and robotics expert; former IDF intelligence officer with a B.Sc. in Computer & Electrical Engineering and 25 years experience leading multidisciplinary teams.

NADAV SHURUK
Co-Founder, COO



Nadav holds an MBA from the Hebrew University of Jerusalem and 20+ years experience in management, finance, business development, marketing and operations.

RON DANON
CTO



Robotics expert and entrepreneur. 15 years of experience with MC, ROS, visions and autonomous robotics.

LIOR ZAIBEL
Chief Algo Engineer



Algorithms and vision expert. Graduate of prestigious Talpiyot program (IDF). Spent more than 10 years with Israeli Air force working on perception and reality capture.

MICHAEL DORMAN
Strategy and Growth



Seasoned contech executive. Formerly VP at Hexagon AB and Leica Geosystems, he now leverages his AEC expertise to drive strategic growth and technology adoption in the built environment.

Okibo Overview

FINANCING

\$13M raised

\$8M credit facility for robots

\$3M in 5 IIA Grants

WHEN & WHERE

Founded in 2018

HQ Israel

Offices in Germany
(2022) and USA (2025)

KEY METRICS

20 Robots contracted

\$1.5M 2026 Q1 Booked Revenue

\$124M Pipeline (with \$36M in expansion potential)

PRODUCT MILESTONES

Certified lightweight model (EG7)

24ft reach model (EG7 Plus)

2M+ Sqft covered with 10+ customers

BACKED BY

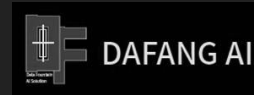


PI LABS



COMPETITIVE DIFFERENTIATION

- No prior digital information required
- No-prescanning
- No setup time / markers
- High autonomy level
- Real-time Autonomous Execution Planner
- Multiple use cases
- Proven track record



ASK

ROUND

\$12M

Series A

OBJECTIVES ON FUNDS

300+ robots live in strategic US accounts

Future application R&D and deployment

Reduce EG7 BOM < \$40k

US manufacturing setup

MILESTONES

HARDWARE/BOM

NEW APPS

DEPLOYMENTS

REVENUES

→ BOM < \$40k

→ Mass Production (USA)

→ Mud boxing (L4)

→ Taping (L1)

→ Roller painting

→ Diamond Grinding

→ 300+ robots in 3 years

→ Q4'2028

→ +\$30M ARR

SERIES A

Appendix



Why Not Humanoids? Why Okibo Wins

Humanoids inherit human inefficiency. We build robots that finish 10,000+ sqft/day.



 okibo

Industrial platform

Purpose-built for real-world construction workflows

Task-level precision

Consistent, high-accuracy performance at scale

Deterministic execution

Predictable, repeatable outcomes - no variability

Not human imitation behaviour

No trial-and-error, no constrained human motion

Efficient architecture

No walking/balance → full focus on the task

Job-site capability

High reach, heavy loads, integrated tools, large battery



Level 4 Sanding up to 24 ft Reach

PROJECT Data center (Leesburg VA, USA)

RESULTS A robot+operator completed ~6000 sqft in 1 day
Equivalent to a team of 8-10 tapers

- VALUE
- Time saving
 - Cost saving
 - Dust free process
 - No worker's fatigue, no risk working in heights
 - No scaffolds, no lifts
 - Consistent performance
 - Data monitoring



EG7-Plus | 24ft reach platform

Over 10x
Efficiency Gain

Autonomous Ceiling Application

PROJECT German Ministry of Defense, Bonn, Germany

RESULTS 16,000 sqm (172,000 sqft)

VALUE

- 1200 sqm on average per day (13,000 sqft)
- Efficiency Equivalent to 8 painters
- Project completed 2 days earlier than expected
- No worker's neck and back strain
- Consistent performance
- Data monitoring



EG6 | Ceiling Painting

Over 8x
Efficiency Gain